

Feedwater Heater Operation and Maintenance Seminar

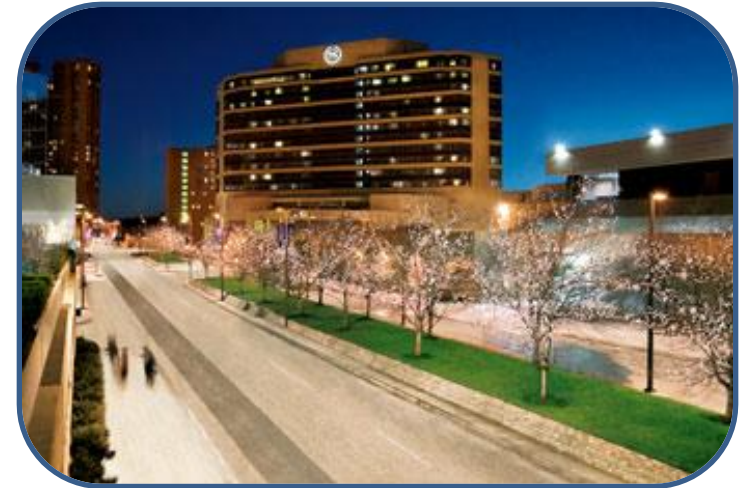
August 21st – 23rd, 2012

Sheraton Inner Harbor – Baltimore, MD

Sponsored by:



**1133D Industrial Pkwy
Brick, NJ 08724
(732) 202-1133
www.powerfect.com**

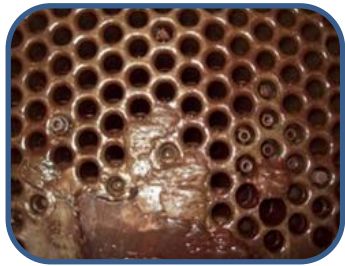


Course Description

Power Plant efficiency and availability depend greatly on Feedwater Heater (FWH) performance. An early EPRI analysis identified FWH's as key components affecting plant unavailability. According to one study, the tube failures in a single FWH could cost a utility \$1 million per year.

This course gives basic knowledge of heat transfer and thermo-dynamics, as well as an in depth review of FWH construction, operation and maintenance guidelines, including today's state of the art designs. It also provides information on how to generate a specification for a replacement FWH.

Utility personnel will benefit greatly from the Instructor's experience and advice.



Course Outline (2 ½ Day Seminar) :

★ General Description of Closed FWH Design

- Basic Overview
- Heat Transfer Relationships
- FWH Internals and Functions
- Standards and Guidelines

★ Operational Guidelines

- Maximize Operator Flexibility
- On-Line Performance Monitoring
- Cyclic, Abnormal and Overload Operation
- Performance Testing-Heat Balances
- Performance Modeling

★ Significant Patterns of Failure & Understanding Key Problems

- Level Control
- Tube Vibration
- Flow Acceleration and Other Forms of Corrosion
- Venting
- Steam Impingement
- Principal Areas of FWH Problems

★ Lifecycle Management

- FWH Inspection and Testing
- Non Destructive Examination Techniques

★ Corrective Maintenance Practices

- Tube Plugging
- Tube Sleeving
- Tube Sheet Repairs
- Maintenance Documents & Data Recording

★ Specification Guidelines for Replacement

- Heater Replacement Justification
 - Heater Performance Factors
 - Economic Factors
- Acquisition Process
 - Preparing the Specification
 - Selecting a Vendor

Price: \$850.00 per person - includes course handout notebook, breakfast, lunch, refreshments and certificate of attendance.

Registration: Contact Mary Jane Luddy at (732) 202-1133 or powerfect@verizon.net



Instructors:

Michael C. Catapano **President, Powerfect, Inc.**

Michael Catapano has over 35 years experience in the operation, design, procurement and maintenance of feedwater heaters and other shell and tube heat exchangers. President of Powerfect, Inc. he has supported EPRI in numerous feedwater heater projects and seminars. He holds three patents pertaining to feedwater heater testing and repair and was selected as Inventor of the year 1990. He is a former Chairman of the ASME Power Division Heat Exchanger Committee.

Eric B. Svensson

Vice President – Engineering, Powerfect, Inc.

Eric Svensson joined Powerfect in September 2004. Eric graduated from The Georgia Institute of Technology in 1993 with a Bachelor's Degree in Chemical Engineering. Eric joined the Naval Nuclear Propulsion program shortly after graduation where he received training in Nuclear Power Theory and Operations. While in the Navy, he served as Chief Engineer on a nuclear powered submarine. In 2000, Eric received a Master's of Science in Operations Management from the University of Arkansas.

Hotel Reservations:

The Sheraton Inner Harbor Hotel is connected to the Convention Center and a brief walk from the Inner Harbor, Oriole Park at Camden Yards, and M&T Bank Stadium which is home to the Baltimore Ravens.

Hotel Reservations are the responsibility of the attendee. Reservations may be made by calling the hotel directly at (410) 962-8300 ext. - Reservations or at the Starwood Toll Free number, 1-800-325-3535. Use the group name "Powerfect" to receive the discounted group rate of \$149.00. This special hotel rate is only valid until July 21st, 2012.

Reservations can also be made on-line at

<https://www.starwoodmeeting.com/StarGroupsWeb/booking/reservation?id=1201058112&key=CE6E5>

